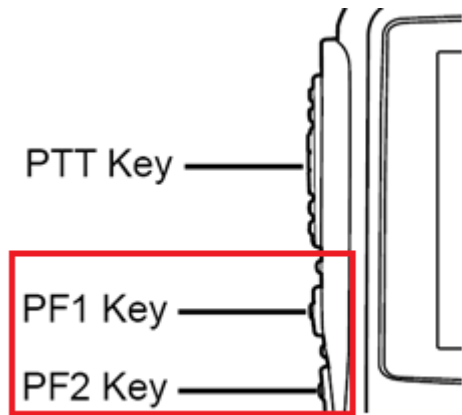


## ALINCO DJ-MD5XLT Series Firmware Update Instructions.

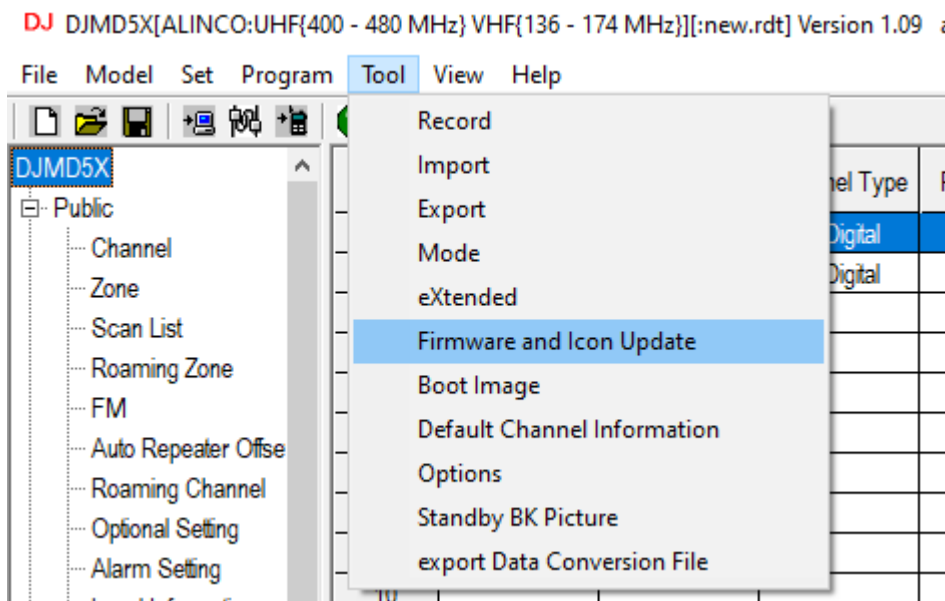
Please download the FW v2.00 below

- Firmware 2.00: [https://www.remtronix.com/downloads/fw/DJ-MD5XLT\\_FWv2.0.zip](https://www.remtronix.com/downloads/fw/DJ-MD5XLT_FWv2.0.zip)
- CPS 1.00: [https://www.remtronix.com/downloads/DJMD5XLT\\_CPS\\_1.00.zip](https://www.remtronix.com/downloads/DJMD5XLT_CPS_1.00.zip)

1. Backup your current Radio Data and save. (Codeplug)
2. **"RUN"** the DJMD5XLT\_1.00 CPS Utility in windows under **"Administrator"** mode.
  - Turn ON the Unit with **PF1 + PF2** Buttons Pressed. You will see a "RED" Flashing LED upper right top corner of the screen indicating your Unit is now on Firmware Update Mode. Plug in the USB Cable to PC & Radio



3. Open up the CPS Utility and Select "Tools" from the Top Menu and select "Firmware and Icon Update"



4. Locate the Firmware Data and select the **"DJ-MD5XLT\_V2.00\_20221007"** file data.

DJ Firmware\_Update

Open Update File

File Name

Model

Version

☐ Encrypt

Com Port

Com Speed 115200

☒ Duplex

Write

Exit

5. Choose the appropriate COM Port and lower the COM Speed to 115200

DJ Firmware\_Update

Open Update File

File Name

Model DJMD5X

Version V110

☐ Encrypt

Com Port

Com Speed 115200

☒ Duplex

Write

Exit

6. Select option "Duplex" and write the FW to your unit.
7. If all goes well, you should be able to FLASH with latest Firmware successful.  
Unit will Initialize and return to its original screen display status.
8. **Recommend** performing a Factory **RESET** after firmware update.

9. If you encounter and ERROR Message “Run-Time error '5'” You will need to run the CPE/Clone Utility in “**Administrator**” mode.
- To Run the CPS Utility in Administrator mode (Place the Mouse cursor on “DJ\_MD5XLT\_1.00” icon and Right click the Mouse button)
  - Select “Properties” and click on “Compatibility”
  - Check on “Run this program as an Administrator”

