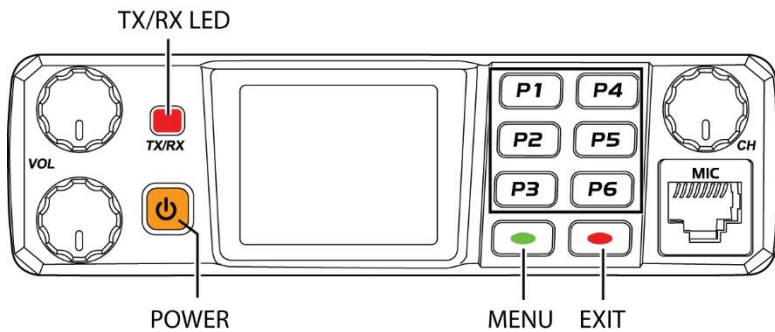
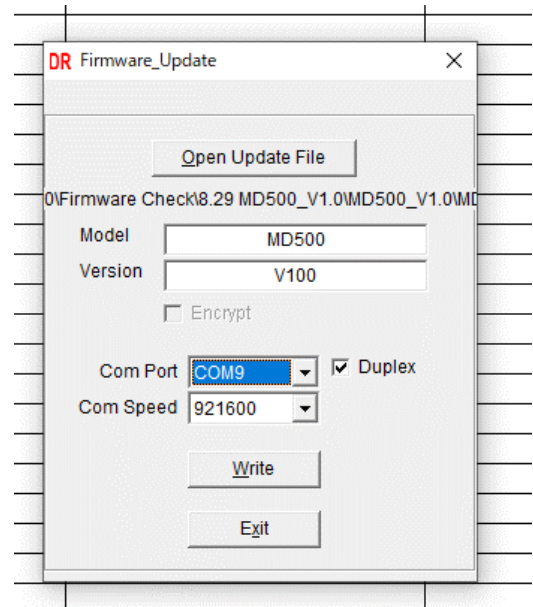
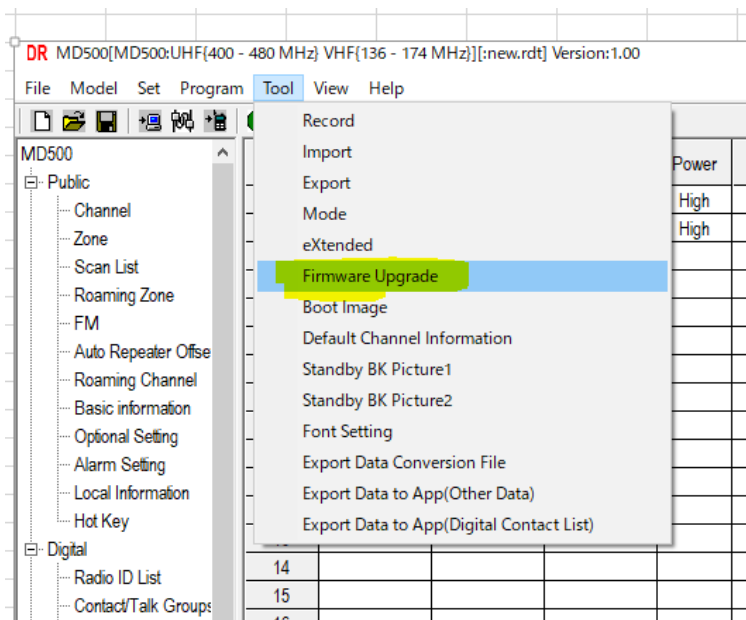


# DR-MD500 Firmware Update Instructions



1. Turn ON the radio
2. Once the Radio is ON, Press and hold “MENU and EXIT” keys down first and then Press “POW” (Power Key)
3. You will see display screen go blank. With “Menu and Exit” Keys still press down, let go of “POW” key (Power)
4. A RED flashing light popup on TX/RX LED. Now let go of “Menu and Exit” keys.
5. A RED light will flash on “TX/RX” LED indicator
6. Unit is ready for firmware update
7. Open up the CPS Utility and select “**TOOL**” > “**Firmware Upgrade**” as below illustration



1. Open and locate the Firmware Data file and select the “COM Port” of the data cable
2. “**Write**” firmware data to the Radio. Exit once update is successful.