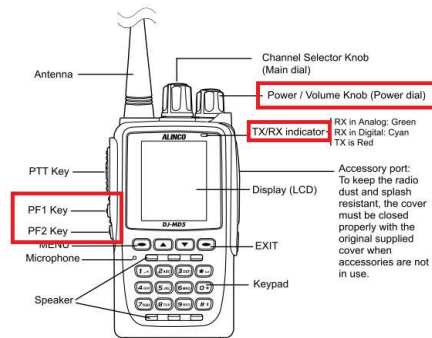


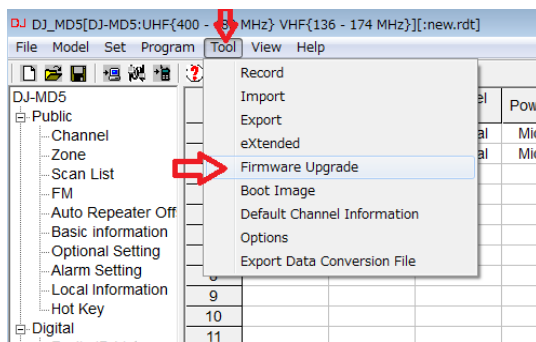
DJMD5 update

* DJMD5 Update mode

Turn on the power while pressing PF1 and PF2
Indicator blinks in red



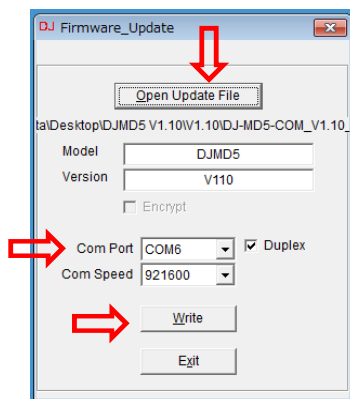
* Firmware update tool



Please open "spi" file

After connecting the radio, please select COM port

Click "Write" to write



Never turn off the radio while updating. Also please use a fully charged battery

After updating, the radio restarts automatically

* Confirmation after updating

Follow the steps below to check the Firmware version

- 1 Press the menu key (Green key) to enter the main menu
- 2 Select "settings" using up / down keys
- 3 Select "3 Device Info"
- 4 Confirm "Firmware Ver" using down key

